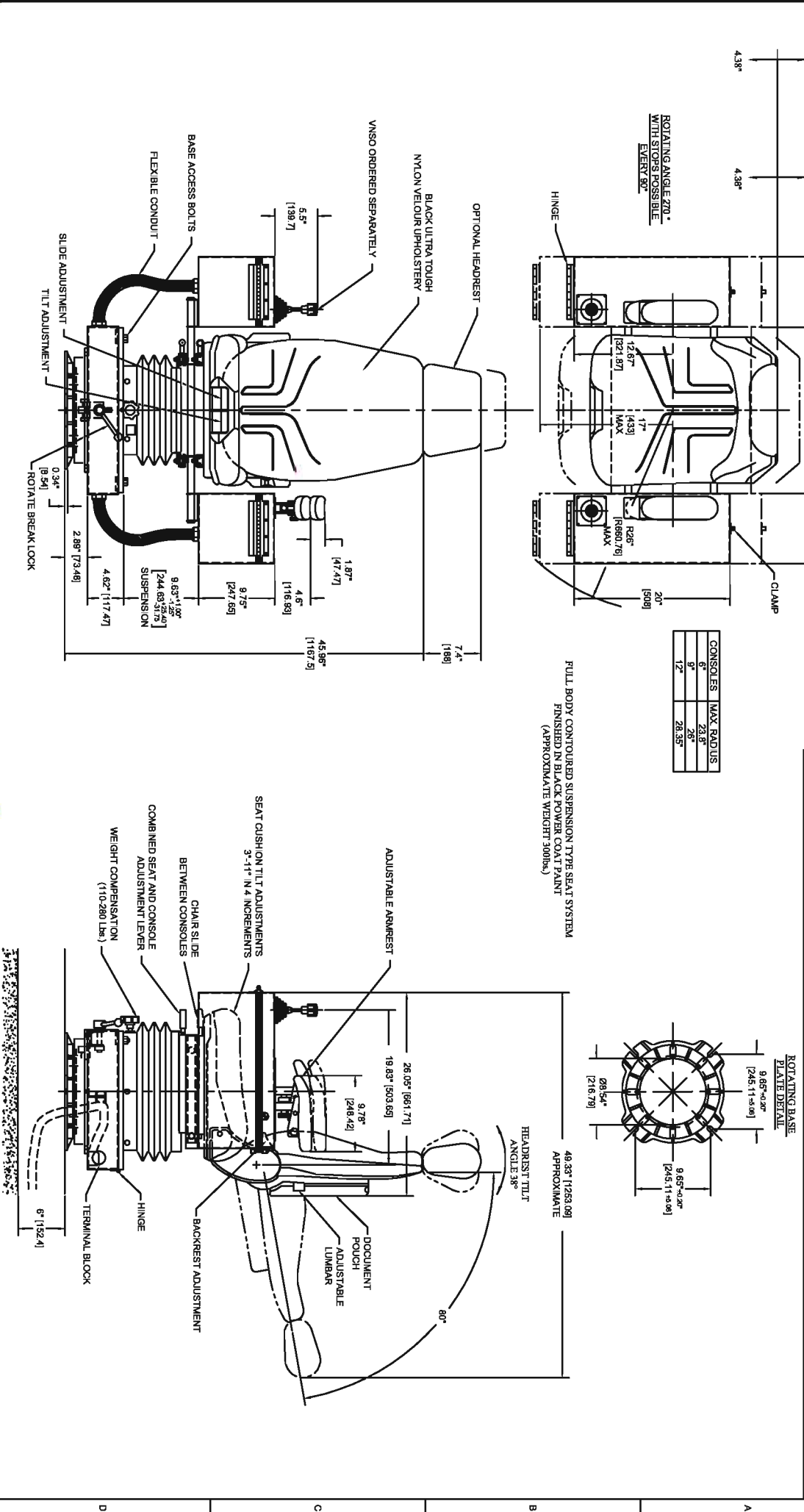
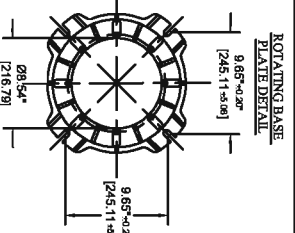


The purpose of this document is for sales clarification only. Some options may not be drawn to scale. This drawing is a generic representation of a custom built product. Design and dimensions are subject to change to as built. Please consult factory if dimensions are critical or if a certified drawing is required.



| CONSOLES | MAX RADUIS |
|----------|------------|
| 6" | 23.6" |
| 9" | 28.6" |
| 12" | 28.35" |

FULL BODY CONTOURED SUSPENSION TYPE SEAT SYSTEM
FINISHED IN BLACK POWER COAT PAINT
(APPROXIMATE WEIGHT 300lbs.)



| REV. | DATE | BY | DESCRIPTION | REV. | DATE | BY | DESCRIPTION |
|------|----------|----|---|------|------|----|-------------|
| 01 | 04/03/01 | GZ | UPDATED TO NEW OVERALL DIM | | | | |
| 02 | 07/27/04 | KY | UPDATED CHAIR SLIDE DIM FROM 4 TO 4.38" | | | | |

ENGINEERING CHANGES / REVISIONS

JRMERRITT
CONTROLS, INC.
STRAFORD, CT 06615

THIS DOCUMENT CONTAINS DATA WHICH IS CONFIDENTIAL AND PROPRIETARY TO JRMERRITT CONTROLS, INC. ANY REPRODUCTION OR ANY USE OF ANY PART OF THIS DOCUMENT WITHOUT THE WRITTEN PERMISSION OF JRMERRITT CONTROLS, INC. IS PROHIBITED.

| TOLERANCES | SCALE | DATE | REVISED |
|--------------------|-------|----------|---------|
| ALL DIM IN CHANGES | 1:1.2 | 02/12/92 | |
| X .001 | | | |
| XX .002 | | | |
| XXX .005 | | | |
| PRODUCTION | | | |
| APPROVED DATE | | | |

PROJECT # **LRC-100 APPROX OVERALL DIM**

ISSUED BY **B61.101.1725**

REVISED BY **1725**