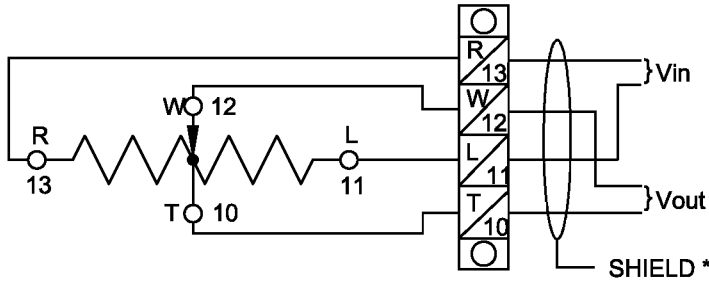


POTENTIOMETER WIRING & SPECIFICATION BULLETIN

JRMC WIRED

CUST. WIRED



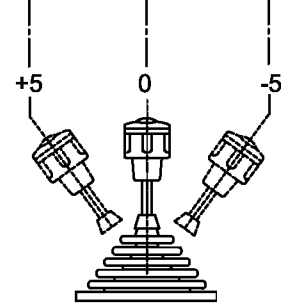
* NOTE: Shielded cable is recommended for all signal wires.

PLUS/MINUS CONTROL

CENTER TAPPED POTENTIOMETER (4 WIRE)

$$V_{out} = +V_{in}/2 \quad 0 \quad -V_{in}/2$$

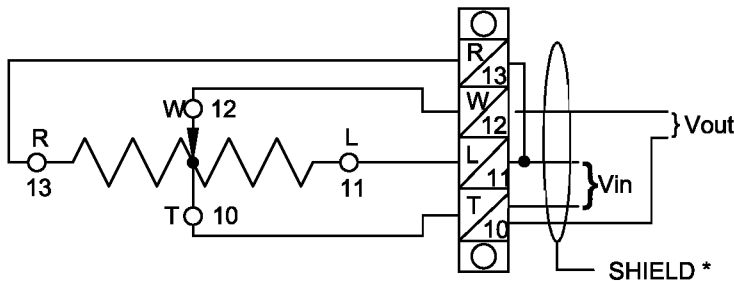
Ex. $V_{in} = 10$
 $V_{out} =$
(NO LOAD)



for $\pm 10V$ out apply 20V in
(24V power supply
with trim pot required)

JRMC WIRED

CUST. WIRED



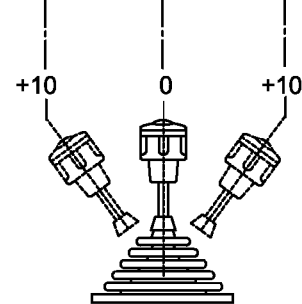
* NOTE: Shielded cable is recommended for all signal wires.

PLUS CONTROL

CENTER TAPPED POTENTIOMETER (4 WIRE)

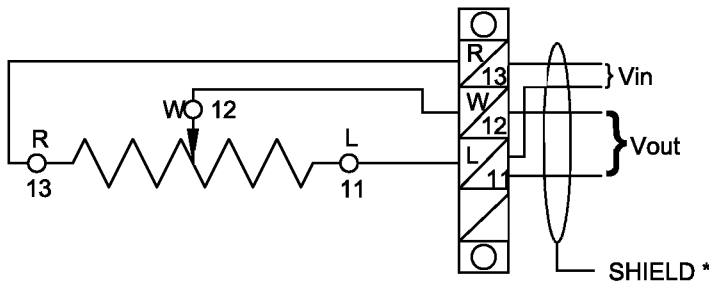
$$V_{out} = +V_{in} \quad 0 \quad +V_{in}$$

Ex. $V_{in} = 10$
 $V_{out} =$
(NO LOAD)



JRMC WIRED

CUST. WIRED



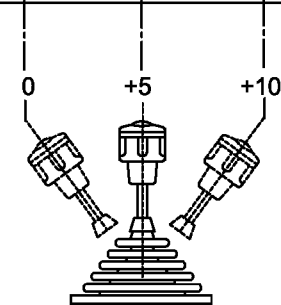
* NOTE: Shielded cable is recommended for all signal wires.

PLUS CONTROL

STANDARD POTENTIOMETER (3 WIRE)

$$V_{out} = 0 \quad +V_{in}/2 \quad +V_{in}$$

Ex. $V_{in} = 10$
 $V_{out} =$
(NO LOAD)



REV01 - KY - 02/18/03 ADDED CLAROSTAT POT
REV02 - KY - 09/05/03 ADDED BI TECH POT; REMOVED SERVO INST. & SPECTROL POTS

POTENTIOMETER SPECIFICATIONS

POTENTIOMETER	RATING	TYPE	WIPER CURRENT MIN/MAX	LIFE (CYCLES)	ELECTRICAL ANGLE (°)
CLAROSTAT - STANDARD	0.5W	Conductive Plastic	0mA/10mA	5 Million	260°
BI TECH - STANDARD	1W	Conductive Plastic	0mA/1mA	10 Million	300°
PW55/PD550	3W	Wire wound	25mA/100mA	10 Million	250°
PEC	2W	Carbon element	0mA/60mA	1 Million	260°
PW70	5W	Wire wound	25mA/120mA	10 Million	200°
DP60	50W	Wire wound	25mA/500mA	1 Million	270°

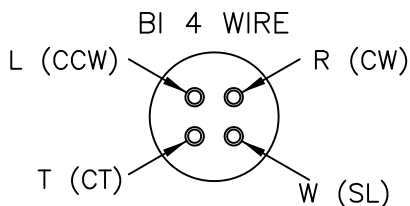
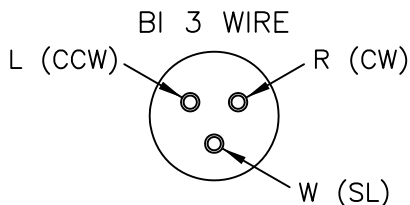
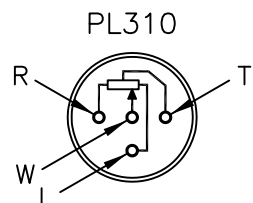
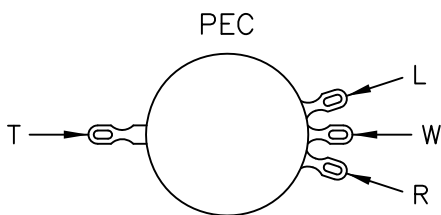
J.R. MERRITT
CONTROLS, INC.

Stratford, CT 06615

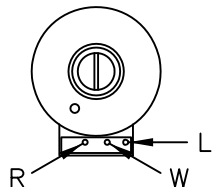
Job#:	Ref:	Cust:
Drawn: DW	Date: 12/19/97	Dwg. #
Checked:	Date:	A45.101.3870
		Rev. # 03

ENGINEERING REVISIONS

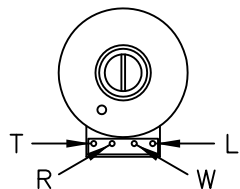
REV:	DESCRIPTION:	ECR NO:	BY:	DATE:	APR'D:
01	ADDED POT TYPE DESIGNATIONS	2783	KY	07/09/07	GAR
02	ADDED NOTES	3216	KY	06/12/08	DB
03	ADDED NOTE 3 & BI CW, CCW DESIGNATIONS	3975	KY	01/13/11	DB



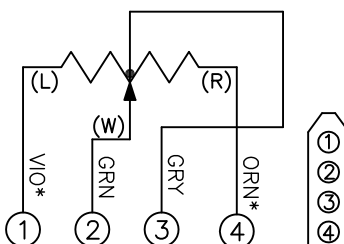
CLAROSTAT 3 WIRE



CLAROSTAT 4 WIRE



4 WIRE POT

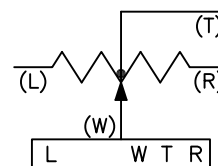


SEE NOTE 3

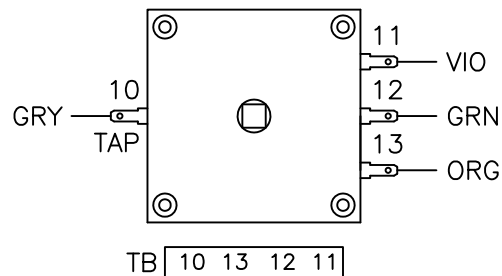
JOYSTICK CONNECTOR:	
CONNECTOR	CONTACTS
05.319	05.053

SUPPLY LOOSE	
CONNECTOR	CONTACTS
05.323	05.063

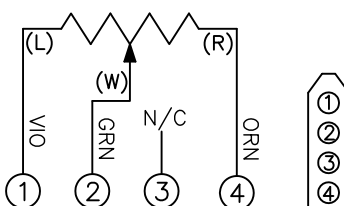
BOARD MOUNTED POTS



PD550



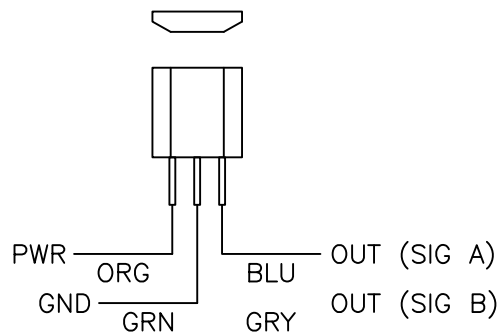
3 WIRE POT



JOYSTICK CONNECTOR:	
CONNECTOR	CONTACTS
05.319	05.053

SUPPLY LOOSE	
CONNECTOR	CONTACTS
05.323	05.063

HALL SENSOR



NOTES:

1. ALL WIRES - 20 AWG, COLOR AS SPECIFIED.
2. WIRES TO EXTEND 6" PAST BODY OF JOYSTICK.
3. BI POTS # 04.484 & 04.500;
R (CW) IS VIO WIRE
L (CCW) IS ORN WIRE



JOB NO:		CUSTOMER: J.R. MERRITT CONTROLS, INC.	
DRAWN: KY	DATE: 08/11/05	SCALE: N/A	
APPROVED: GAR	DATE: 11/03/06	MODEL NO:	
PUB NO: WEB DOC		DWG NO: A25.101.6397	
		SHEET: 1 OF 1	
		REV: 03 SIZE: A	

THIS DOCUMENT CONTAINS DATA WHICH IS CONFIDENTIAL AND PROPRIETARY TO JRMC INC. NO DISCLOSURE, REPRODUCTION, OR ANY USE OF ANY PART OF THIS DOCUMENT MAY BE MADE WITHOUT THE WRITTEN PERMISSION OF JRMC INC.

6397